

Products

Type 1098-EGR Pressure Reducing Regulator

Introduction

Type 1098-EGR regulators provide economical and accurate pressure control in a wide variety of applications: natural gas systems; fuel gas supply to industrial boilers, furnaces and mixers; and commercial or industrial businesses such as steel mills, asphalt plants, and shopping centers. This regulator is used with a Type 6352, 6353, or 6354 pilot.

The superior performance of this regulator is due to the amplifying effect of the pilot and the two-path control system. Changes in outlet pressure act quickly on the actuator diaphragm to provide fast response to changes. The pilot amplifies system changes, positioning the main valve for precise control.

Body Sizes and End Connection Styles

See Table 1

Features

F

- Labor-Saving Trim Maintenance
- Ease of On-Site Maintenance
- No Atmospheric Bleed
- Noise Reduction Capability
- Travel Indicator
- NACE Configurations Available

Maximum Inlet Pressure

400 psig (27,6 bar) or body rating limit, whichever is lower

Maximum Outlet (Casing) Pressure

See Table 2

Outlet Pressure (Control) Ranges

2-inches w.c. to 300 psig (5 mbar to 20,7 bar) in seven ranges
See Table 5

Flow Coefficients

See Table 4

Pressure Registration

External

Temperature Capabilities

-20° to 180°F (-29° to 82°C)

Additional Technical Data

For more technical information contact your Fisher Sales Representative, refer to Bulletin 71.2:1098-EGR, or order your Fisher Regulator CD using the card in the back of this handbook.



Figure 1. Type 1098-EGR

Table 1. Body Sizes and End Connection Styles		
BODY SIZE, INCHES (DN)	CAST IRON	STEEL OR STAINLESS STEEL
1 (25) 2 (50)	NPT Screwed, 125 FF, or 250 RF	NPT Screwed, 150 RF, 300 RF, 600 RF Flanged, BWE, SWE, or PN 16/25/40
3 (80) 4 (100) 6 (150)	125B FF or 250B RF flanged	150 RF, 300 RF, 600 RF Flanged, BWE, or PN 16/25/40

Table 2. Actuator Sizes and Maximum Pressures			
ACTUATOR		OUTLET (CONTROL) PRESSURE, PSIG (BAR)	EMERGENCY CASING PRESSURE, PSIG (BAR)
Type	Size		
1098	30	100 (6,9)	115 (7,9)
	40 (standard)	75 (5,2)	82 (5,7)
	70	50 (3,4)	65 (4,5)
1098H	30	300 (20,7)	400 (27,6)

Table 3. Construction Materials							
BODY MATERIAL	CASING AND BONNET	PLUG AND SEAT RING	CAGE	PISTON RING	DIAPHRAGMS, O-RINGS, SEALS, AND PILOT SEAT	ACTUATOR STEM	PILOT BODY AND CASING
Cast iron, Steel, or Stainless steel	Steel or Stainless steel	S41600 or S31600 Stainless steel	Cast iron or Stainless steel	TFE	Nitrile	17-4PH or S31600 Stainless steel	Aluminum or Stainless steel

Type 1098-EGR Pressure Reducing Regulator

Table 4. Flow Coefficients																				
BODY SIZE, INCHES (DN)	PIPING STYLE																			
	Line Size Equals Body Size Piping										2:1 Line Size to Body Size Piping									
	Linear Cage					Drilled Hole Cage (Whisper Trim™)					Standard Linear Cage					Drilled Hole Cage (Whisper Trim™)				
	C _g		C _v		C ₁	C _g		C _v		C ₁	C _g		C _v		C ₁	C _g		C _v		C ₁
	Regul- ating	Wide- Open	Regul- ating	Wide- Open		Regul- ating	Wide- Open	Regul- ating	Wide- Open		Regul- ating	Wide- Open	Regul- ating	Wide- Open		Regul- ating	Wide- Open	Regul- ating	Wide- Open	
1 (25)	600	632	16.8	17.7	35.7	576	607	16.7	17.6	34.5	568	598	17.2	18.1	33.0	529	557	15.6	16.4	34.0
2 (50)	2280	2400	63.3	66.7	36.0	1970	2080	54	57	36.0	2050	2160	59.6	62.8	34.4	1830	1930	52	55	35.0
3 (80)	4630	4880	132	139	35.1	3760	3960	107	113	35.0	4410	4650	128	135	34.4	3630	3830	106	110	34.2
4 (100)	7320	7710	202	213	36.2	6280	6610	180	190	34.8	6940	7310	198	209	35.0	6020	6340	171	180	35.2
6 (150)	12,900	13,600	397	418	32.5	9450	9950	295	310	32.0	12,100	12,800	381	404	31.7	9240	9730	291	306	31.7

Table 5. Outlet (Control) Pressure Ranges			
PILOT TYPE	OUTLET (CONTROL) PRESSURE RANGE	SPRING COLOR	SPRING PART NUMBER
6352	2-inches w.c. to 2 psig (5 to 140 mbar) 2 to 10 psig (0,14 to 0,69 bar)	Yellow Black	14A9672X012 14A9673X012
6353	3 to 40 psig (0,21 to 2,8 bar) 35 to 100 psig (2,4 to 6,9 bar)	Yellow Red	1E392527022 1K748527202
6354 L ⁽¹⁾ 6354 M ⁽²⁾ 6354 H	85 to 200 psig (5,9 to 13,8 bar) 175 to 220 psig (12,1 to 15,2 bar) 200 to 300 psig (13,8 to 20,7 bar)	Blue Blue Green	1L346127412 1L346127412 15A9258X012

1. Without diaphragm limiter.
2. With diaphragm limiter.

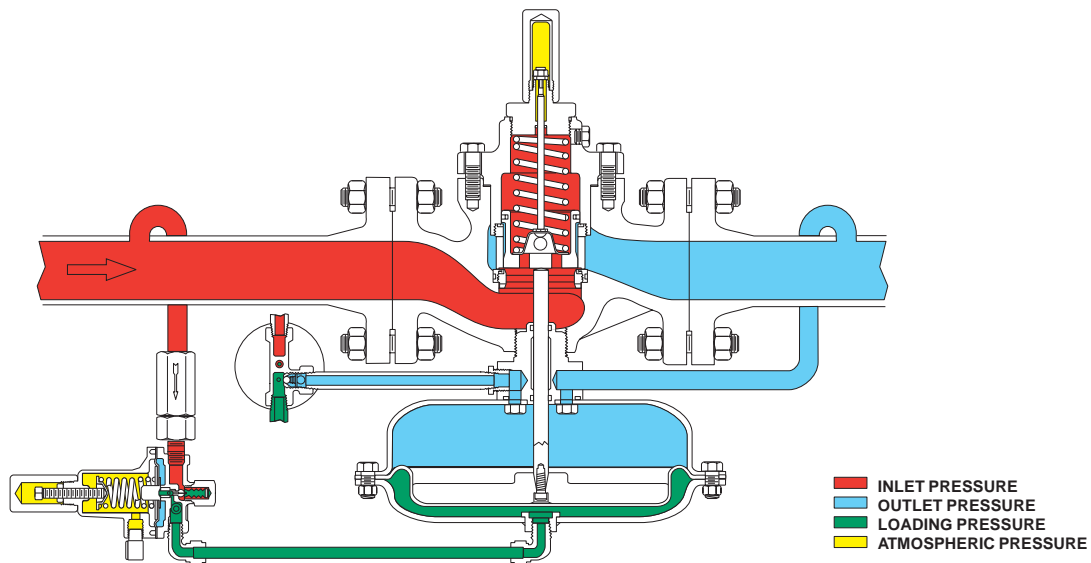


Figure 2. Operational Schematic

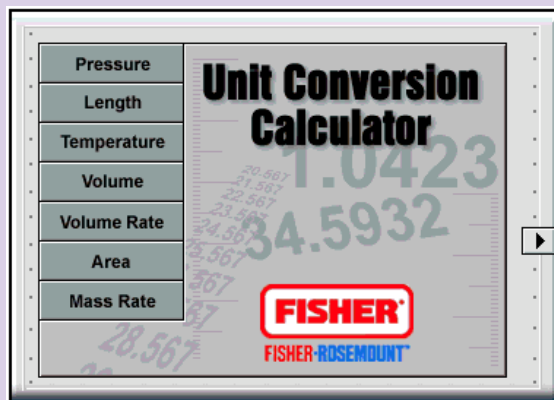
Products

Type 1098-EGR Pressure Reducing Regulator

Table 6. Maximum and Minimum Differential Pressures for Main Valve Spring Selection

BODY SIZE, INCHES (DN)	SPRING PART NUMBER AND COLOR	MAXIMUM ALLOWABLE DIFFERENTIAL PRESSURE, PSIG (BAR)	MINIMUM DIFFERENTIAL PRESSURE REQUIRED FOR FULL STROKE, PSIG (BAR)		
			Size 30 Actuator	Size 40 Actuator	Size 70 Actuator
1 (25)	14A9687X012 Green	60 (4,1)	3.5 (0,24)	2.5 (0,17)	1 (0,069)
	14A9680X012 Blue	125 (8,6)	5 (0,34)	4 (0,28)	1.5 (0,10)
	14A9679X012 Red	400 (28) or body rating limit, whichever is lower	7 (0,48)	5 (0,34)	2.5 (0,17)
2 (50)	14A6626X012 Yellow	20 (1,4)	---	2.0 (0,14)	1.0 (0,069)
	14A6626X012 Green	60 (4,1)	4 (0,28)	3 (0,21)	1.5 (0,10)
	14A6627X012 Blue	125 (8,6)	6 (0,42)	5 (0,34)	2 (0,14)
	14A6628X012 Red	400 (28) or body rating limit, whichever is lower	11 (0,76)	10 (0,69)	3 (0,21)
3 (80)	14A6771X012 Yellow	20 (1,4)	---	2.5 (0,17)	1.0 (0,069)
	14A6629X012 Green	60 (4,1)	5 (0,34)	4 (0,28)	2 (0,14)
	14A6630X012 Blue	125 (8,6)	8 (0,55)	6 (0,42)	2.5 (0,17)
	14A6631X012 Red	400 (28) or body rating limit, whichever is lower	14 (0,97)	11 (0,76)	4 (0,28)
4 (100)	14A6770X012 Yellow	20 (1,4)	---	3.5 (0,24)	1.3 (0,09)
	14A6632X012 Green	60 (4,1)	10 (0,69)	5 (0,34)	2.5 (0,17)
	14A6633X012 Blue	125 (8,6)	13 (0,90)	8 (0,55)	3 (0,21)
	14A6634X012 Red	400 (28) or body rating limit, whichever is lower	22 (1,5)	13 (0,90)	5 (0,34)
6 (150)	15A2253X012 Yellow	20 (1,4)	---	6.0 (0,41)	2.2 (0,15)
	14A9686X012 Green	60 (4,1)	13 (0,90)	9.5 (0,66)	4 (0,28)
	14A9685X012 Blue	125 (8,6)	19 (1,3)	14 (0,97)	6 (0,42)
	15A2615X012 Red	400 (28) or body rating limit, whichever is lower	---	19 (1,3)	8 (0,55)

F



Fisher Controls Regulator Division Literature CD-ROM — Your Source For Interactive Information

The Fisher Controls Regulator Literature CD contains the Fisher-Rosemount Unit Conversion Calculator, allowing you to convert the following:

- Pressure
- Length
- Temperature
- Volume and Volume Rate
- Area
- Mass Rate

Mail in the card found at the back of this handbook, or call your Fisher Sales Representative to get your FREE CD.

Type 1098-EGR Pressure Reducing Regulator

Table 7. Available Pilot Configurations

CONSTRUCTION		TYPE NUMBER		
		6352	6353	6354L, 6354M or 6354H
Unbalanced pilot valve plug		---	---	---
Balanced pilot valve plug		Standard	Standard	Standard
Aluminum spring case with drilled vent and without closing cap		Optional	Optional	Optional
1/4-inch 18-NPT tapped spring case with closing cap and removable vent	Aluminum	Standard	Standard	Standard
	Stainless Steel	Optional	Optional	Optional
Pilot Restriction	Standard gain (indicated by S stamped on pilot body and nameplate)	Standard	Standard	Standard
	Low gain for liquid service and/or broader proportional bands (indicated by L stamped on pilot body and nameplate)	Optional	Optional	Optional
	High gain for narrower proportional bands (indicated by H stamped on pilot body and nameplate)	Optional	Optional	Optional

Table 8. Proportional Band (Standard Pilot Restriction and Size 40 Type 1098 Actuator⁽¹⁾)

BODY SIZE, INCHES (DN)	PILOT		PROPORTIONAL BAND, PSI (BAR)		
	Type Number	Control Spring Color	Yellow or Green Main Valve Spring	Blue Main Valve Spring	Red Main Valve Spring
1 (25)	6352	Yellow	0.04 (0,0028)	0.1 (0,0069)	0.2 (0,014)
		Black	0.08 (0,0056)	0.2 (0,014)	0.4 (0,028)
	6353	Yellow	0.2 (0,014)	0.4 (0,028)	0.8 (0,055)
		Red	0.4 (0,028)	0.8 (0,055)	1.0 (0,069)
2 (50)	6352	Yellow	0.05 (0,0034)	0.15 (0,010)	0.3 (0,021)
		Black	0.1 (0,0069)	0.3 (0,021)	0.6 (0,042)
	6353	Yellow	0.3 (0,021)	0.5 (0,034)	1.0 (0,069)
		Red	0.5 (0,034)	1.0 (0,069)	1.4 (0,097)
3 (80)	6352	Yellow	0.1 (0,0069)	0.2 (0,014)	0.4 (0,028)
		Black	0.2 (0,014)	0.4 (0,028)	0.8 (0,055)
	6353	Yellow	0.4 (0,028)	0.6 (0,042)	1.2 (0,083)
		Red	0.9 (0,062)	1.2 (0,083)	1.5 (0,10)
4 (100)	6352	Yellow	0.15 (0,010)	0.3 (0,021)	0.6 (0,042)
		Black	0.3 (0,021)	0.6 (0,042)	1.2 (0,083)
	6353	Yellow	0.7 (0,048)	0.8 (0,055)	1.4 (0,097)
		Red	1.2 (0,083)	2.0 (0,14)	3.0 (0,21)
6 (150)	6352	Yellow	0.2 (0,014)	0.4 (0,028)	0.8 (0,055)
		Black	0.4 (0,028)	0.8 (0,055)	1.6 (0,11)
	6353	Yellow	0.9 (0,062)	1.5 (0,10)	2.0 (0,14)
		Red	1.5 (0,10)	2.5 (0,17)	3.5 (0,24)

1. For other combinations, multiply table values by 1.6 for a size 30 actuator, 0.4 for a size 70 actuator, 2.0 for a low-gain Type 6352 or 6353 pilot restriction, and 0.5 for a high-gain Type 6352 or 6353 pilot restriction. For instance, a standard 2-inch Type 1098-EGR-6352 regulator with black pilot control spring and blue main valve spring has a proportional band of 0.3 psi (0,21 bar) as given in the table, but this same regulator with low-gain restriction and size 70 actuator has a proportional band of 0.3 psi (0,021 bar) x 2.0 x 0.4 = 0.24 psi (0,017 bar).

F

Products

Type 1098-EGR Pressure Reducing Regulator

Table 9. Approximate Proportional Band Range (Standard Pilot Restriction, Size 30 Type 1098H Actuator⁽¹⁾)

BODY SIZE, INCHES	PILOT		APPROXIMATE PROPORTIONAL BAND RANGE, PSI (BAR)		
	Type Number	Control Spring Color	Green Main Valve Spring	Blue Main Valve Spring	Red Main Valve Spring
1	6354L, 6354M, or 6354H	Blue or Green	1.0 (0,069)	1.5 (0,10)	2.5 (0,17)
2	6354L, 6354M, or 6354H	Blue or Green	1.5 (0,10)	2.0 (0,14)	3.0 (0,21)
3	6354L, 6354M, or 6354H	Blue or Green	2.5 (0,17)	3.0 (0,21)	4.0 (0,28)
4	6354L, 6354M, or 6354H	Blue or Green	3.5 (0,24)	4.0 (0,28)	5.0 (0,34)
6	6354L, 6354M, or 6354H	Blue or Green	4.0 (0,28)	5.0 (0,34)	Not Available

1. For other restrictions, multiply table values by 2.0 for a low-gain restriction or by 0.5 for a high gain restriction. For instance, a standard 2-inch Type 1098H-EGR-6354L regulator with blue control spring and blue main valve spring has a proportional band of 2.0 psi (0,14 bar) as given in the table. But this same regulator with low-gain restriction has a proportional band of 2.0 psi (0,14) x 2.0 = 4.0 psi (0,28 bar).

Table 10. Capacities

INLET PRESSURE, PSIG (BAR)	OUTLET PRESSURE SETTING, PSIG (BAR)	CAPACITIES IN THOUSANDS OF SCFH (m ³ /h(n)) OF 0.6 SPECIFIC GRAVITY NATURAL GAS FOR REGULATORS WITH STANDARD LINEAR CAGE, STANDARD TRAVEL, AND LINE SIZE EQUALS MAIN VALVE BODY SIZE				
		1-Inch Body Size	2-Inch Body Size	3-Inch Body Size	4-Inch Body Size	6-Inch Body Size
3 (0,21)	7-inches w.c. (17 mbar)	8.5 (0,228)	32 (0,857)	64 (1,72) ⁽¹⁾	100 (2,68) ⁽¹⁾	---
5 (0,34)	7-inches w.c. (17 mbar)	11.2 (0,300)	42 (1,13)	86 (2,31)	133 (3,56) ⁽¹⁾	255 (6,83) ⁽¹⁾
	1 (0,069)	10.5 (0,281)	39 (1,05)	80 (2,14)	125 (3,35) ⁽¹⁾	240 (6,43) ⁽¹⁾
	2 (0,14)	9.2 (0,247)	35 (0,938)	72 (1,93) ⁽¹⁾	112 (3,00) ⁽¹⁾	---
10 (0,69)	7-inches w.c. (17 mbar)	16.8 (0,500)	63 (1,69)	126 (3,38)	200 (5,36)	370 (9,92)
	3 (0,21)	14.0 (0,375)	56 (1,50)	112 (3,00)	177 (4,74)	320 (8,58) ⁽¹⁾
	5 (0,34)	13.2 (0,354)	49 (1,31)	100 (2,68)	155 (4,15)	300 (8,04) ⁽¹⁾
	7 (0,48)	10.5 (0,281)	39 (1,05)	80 (2,14)	125 (3,35) ⁽¹⁾	---
15 (1,0)	1 (0,069)	21.0 (0,563)	80 (2,14)	160 (4,29)	250 (6,70)	470 (12,6)
	4 (0,28)	19.5 (0,523)	74 (1,98)	150 (4,02)	235 (6,30)	440 (11,8)
	8 (0,55)	16.7 (0,448)	63 (1,69)	125 (3,35)	200 (5,36)	380 (10,2) ⁽¹⁾
	12 (0,83)	11.7 (0,314)	44 (1,18)	89 (2,39) ⁽¹⁾	140 (3,75) ⁽¹⁾	---
20 (1,4)	1 (0,069)	25.5 (0,683)	97 (2,60)	195 (5,23)	325 (8,71)	570 (15,3)
	10 (0,69)	21.0 (0,563)	79 (2,12)	160 (4,29)	250 (6,70)	530 (14,2)
	15 (1,0)	15.5 (0,415)	63 (1,69)	122 (3,27)	188 (5,04)	370 (9,92) ⁽¹⁾
	17 (1,2)	12.5 (0,335)	47 (1,26)	95 (2,55) ⁽¹⁾	155 (4,15) ⁽¹⁾	---
30 (2,1)	4 (0,28) or less	34.6 (0,927)	131 (3,51)	267 (7,16)	422 (11,3)	744 (19,9)
	15 (1,0)	28.5 (0,764)	110 (2,95)	220 (5,90)	340 (9,11)	650 (17,4)
	20 (1,4)	24.5 (0,657)	93 (2,49)	185 (4,96)	295 (7,90)	570 (15,3)
	25 (1,7)	18.3 (0,490)	69 (1,849)	140 (3,75)	217 (5,81)	420 (11,3) ⁽¹⁾
40 (2,8)	9 (0,62) or less	42.3 (1,13)	161 (4,32)	327 (8,76)	517 (13,9)	910 (24,4)
	20 (1,4)	36.0 (0,965)	135 (3,62)	275 (7,37)	430 (11,5)	800 (21,4)
	30 (2,1)	27.5 (0,737)	105 (2,81)	215 (5,76)	330 (8,84)	650 (17,4)
	35 (2,4)	20.0 (0,536)	78 (2,09)	155 (4,15)	245 (6,57)	350 (9,38) ⁽¹⁾
50 (3,4)	13 (0,9) or less	50 (1,34)	190 (5,09)	386 (10,3)	611 (16,4)	1077 (28,9)
	20 (1,4)	46 (1,23)	175 (4,69)	350 (9,38)	540 (14,5)	1020 (27,3)
	30 (2,1)	41 (1,10)	152 (4,07)	302 (8,09)	470 (12,6)	920 (24,7)
	40 (2,8)	32 (0,858)	115 (3,08)	235 (6,30)	370 (9,92)	710 (19,0)
	45 (3,1)	23 (0,616)	85 (2,28)	172 (4,61)	265 (7,10)	450 (12,1) ⁽¹⁾
75 (5,2)	24 (1,7) or less	69.4 (1,86)	264 (7,08)	536 (14,4)	847 (22,7)	1493 (40,0)
	50 (3,4)	53 (1,42)	210 (5,63)	420 (11,3)	630 (16,9)	1220 (32,7)
	60 (4,1)	43 (1,15)	165 (4,42)	330 (8,84)	525 (14,1)	1020 (27,3)
	70 (4,8)	26 (0,697)	100 (2,68)	200 (5,36)	320 (8,58)	630 (16,9) ⁽¹⁾
100 (6,9)	35 (2,4) or less	88.8 (2,38)	337 (9,03)	685 (18,4)	1083 (39,0)	1909 (51,2)
	60 (4,1)	74 (1,98)	280 (7,50)	460 (12,3)	880 (23,6)	1700 (45,6)
	75 (5,2)	62 (1,66)	235 (6,30)	480 (12,9)	740 (19,8)	1450 (38,9)
125 (8,6)	46 (3,2) or less	108 (2,89)	411 (11,0)	834 (22,4)	1319 (35,3)	2325 (62,3)
	75 (5,2)	90 (2,41)	340 (9,10)	700 (18,8)	1080 (28,9)	1830 (49,0)
150 (10,3)	57 (3,9) or less	127 (3,40)	484 (13,0)	984 (26,4)	1555 (41,7)	2741 (73,5)
	75 (5,2)	115 (3,08)	430 (11,5)	870 (23,3)	1370 (36,7)	2550 (68,3)
175 (12,1)	68 (4,7) or less	147 (3,94)	558 (15,0)	1133 (30,4)	1791 (48,0)	3457 (92,6)
	75 (5,2) or less	166 (4,45)	631 (16,9)	1282 (34,4)	2027 (54,3)	3573 (95,8)
	250 (17,2)	205 (5,49)	779 (20,9)	1581 (42,4)	2500 (67,0)	4405 (118)
300 (20,7)	75 (5,2) or less	244 (6,54)	926 (24,8)	1880 (50,4)	2972 (79,6)	5237 (140)
	350 (24,2)	282 (7,56)	1070 (28,7)	2178 (58,4)	3444 (92,3)	6069 (163)
	400 (27,6)	321 (8,60)	1220 (32,7)	2477 (66,4)	3916 (105)	6901 (185)

1. Requires size 70 actuator.

F



Type 1098-EGR Pressure Reducing Regulator

Table 11. Main Valve Dimensions										
BODY SIZE, INCHES (DN)	DIMENSIONS, INCHES (mm)									
	A				D	G	R	Z		AR
	NPT Cast Iron, 600RF or NPT Steel and Stainless Steel	125B FF Cast Iron or 150 RF Steel and Stainless Steel	250 RF Cast Iron or 300 RF Steel and Stainless Steel	PN 16/25/40 Steel and Stainless Steel				Cast Iron	Steel and Stainless Steel	
1 (25)	8.25 (210)	7.25 (184)	7.75 (197)	7.62 (194)	3.88 (98)	8.62 (219)	4.06 (103)	12.00 (305)	13.75 (349)	3.00 (76)
2 (50)	11.25 (286)	10.00 (254)	10.50 (267)	10.19 (259)	4.56 (116)	9.12 (232)	4.06 (103)	13.31 (338)	15.06 (383)	3.12 (79)
3 (80)	13.25 (337)	11.75 (298)	12.50 (318)	11.81 (300)	5.31 (135)	11.31 (287)	5.06 (129)	16.50 (419)	18.25 (464)	3.88 (98)
4 (100)	15.50 (394)	13.88 (352)	14.50 (368)	13.56 (344)	6.56 (167)	12.69 (322)	5.06 (129)	19.12 (486)	21.12 (536)	5.12 (130)
6 (150)	20.00 (508)	17.75 (451)	18.62 (473)	17.48 (444)	8.06 (205)	13.62 (346)	8.00 (203)	20.25 (514)	23.25 (591)	6.62 (168)

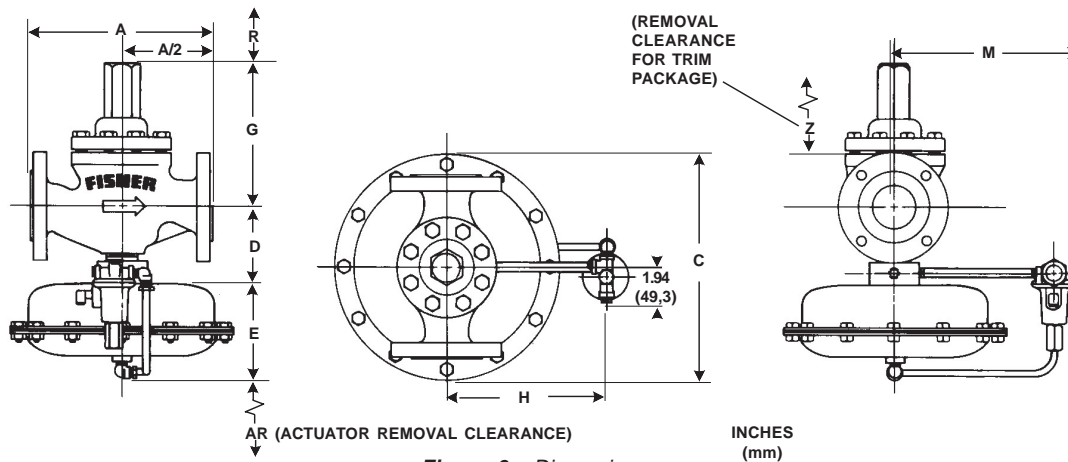


Table 12. Actuator Dimensions					
TYPE AND ACTUATOR SIZE	DIMENSIONS, INCHES (mm)				
	C Diameter	E	H	M	
				With Pilot Spring Case Vent	Without Pilot Spring Case Vent
1098 - 30	11.38 (289)	5.69 (144)	7.88 (200)	9.50 (241)	9.31 (237)
1098H - 30	11.38 (289)	6.06 (154)	7.88 (200)	9.50 (241)	9.31 (237)
1098 - 40	13.12 (333)	5.75 (146)	7.88 (200)	9.50 (241)	9.31 (237)
1098 - 70	21.12 (537)	7.44 (189)	14.19 (360)	15.81 (402)	15.62 (397)

Table 13. Shipping Weight				
BODY SIZE, INCHES (DN)	APPROXIMATE SHIPPING WEIGHT, POUNDS (KG)			
	1098 Size 30 Actuator	1098H Size 30 Actuator	1098 Size 40 Actuator	1098 Size 70 Actuator
1 (25)	55 (25)	80 (36)	65 (29)	140 (64)
2 (50)	75 (34)	100 (45)	85 (39)	160 (73)
3 (80)	115 (52)	140 (64)	125 (57)	200 (91)
4 (100)	165 (75)	190 (86)	175 (79)	250 (113)
6 (150)	350 (159)	375 (170)	360 (163)	435 (197)

Products

Type 1098-EGR Pressure Reducing Regulator Ordering Guide

Size (Select One)

- 1-inch or DN 25***
- 2-inch or DN 50***
- 3-inch or DN 80***
- 4-inch or DN 100***
- 6-inch or DN 150***

Body Material and End Connection Style (Select One)

Cast Iron Body with Cast Iron Body Flange

- NPT Screwed (1 and 2-inch only)***
- 125B FF***
- 250B RF***

Steel Body with Steel Body Flange

- NPT Screwed (1 and 2-inch only)***
- 150 RF***
- 300 RF***
- 600 RF*
- Sch 40 BWE**
- Sch 80 BWE**

- SWE (1 and 2-inch only)*
- PN 16/25 (DN 25 and 50 only)*
- PN 16 (DN 80, 100, and 125 only)*

Stainless Steel Body with Stainless Steel Body Flange

- NPT Screwed (1 and 2-inch only)***
- 150 RF***
- 300 RF***
- 600 RF*
- Sch 40 BWE**
- Sch 80 BWE**
- SWE (1 and 2-inch only)*
- PN 16/25 (DN 25 and 50 only)*
- PN 16 (DN 80, 100, and 125 only)*

Main Valve Spring (Select One)

Maximum Differential and Spring Color

- 20 psi (1,4 bar), Yellow***
- 60 psi (4,1 bar), Green***
- 125 psi (8,6 bar), Blue***
- 400 psi (27,6 bar), Red***

Actuator Size and Outlet Pressure Range (Select One)

1098 Size 40, maximum set pressure 75 psig (5,2 bar) (standard)

- 2-inches w.c. to 2 psig (5 mbar to 0,14 bar)***
- 2 to 10 psig (0,14 to 0,69 bar)***
- 3 to 40 psig (0,21 to 2,8 bar)***
- 35 to 75 psig (2,4 to 5,2 bar)***

1098 Size 30, maximum set pressure 100 psig (6,9 bar)

- 2-inches w.c. to 2 psig (5 mbar to 0,14 bar)**
- 2 to 10 psig (0,14 to 0,69 bar)**
- 3 to 40 psig (0,21 to 2,8 bar)**
- 35 to 100 psig (2,4 to 6,9 bar)**

1098 Size 70, maximum set pressure 50 psig (3,4 bar)

- 2-inches w.c. to 2 psig (5 mbar to 0,14 bar)**
- 2 to 10 psig (0,14 to 0,69 bar)**
- 3 to 40 psig (0,21 to 2,8 bar)**
- 25 to 50 psig (1,7 to 3,4 bar)**

- continued -

F

To order this product, complete this page or complete a specification sheet, then provide the information to your Fisher Sales Representative.

If the construction you need is not offered on this page, contact your Fisher Sales Representative.

Fisher Regulators Quick Order Guide	
* * *	Standard - Readily Available for Shipment
* *	Non-Standard - Allow Additional Time for Shipment
*	Special Order, Constructed from Non-Stocked Parts. Consult Your Fisher Sales Representative for Availability.
Availability of the product being ordered is determined by the component with the longest shipping time for the requested construction.	

Specification Worksheet

Application:
 Specific Use _____
 Line Size _____
 Gas Type and Specific Gravity _____
 Gas Temperature _____
 Does the Application Require Overpressure Protection?
 Yes No If yes, which is preferred:
 Relief Valve Monitor Regulator Shutoff Device
 Is overpressure protection equipment selection assistance desired? _____

Pressure:
 Maximum Inlet Pressure (P_{1max}) _____
 Minimum Inlet Pressure (P_{1min}) _____
 Downstream Pressure Setting(s) (P₂) _____
 Maximum Flow (Q_{max}) _____

Performance Required:
 Accuracy Requirements? _____
 Need for Extremely Fast Response? _____

Other Requirements: _____

Type 1098-EGR Pressure Reducing Regulator Ordering Guide (continued)

1098H Size 30H, maximum set pressure 300 psig (20,7 bar)

- 2-inches w.c. to 2 psig (5 mbar to 0,14 bar)**
- 2 to 10 psig (0,14 to 0,69 bar)**
- 3 to 40 psig (0,21 to 2,8 bar)**
- 35 to 125 psig (2,4 to 8,6 bar)**
- 85 to 200 psig (5,86 to 13,8 bar)**
- 175 to 220 psig (12,1 to 15,2 bar)**
- 200 to 300 psig (13,8 to 20,7 bar)**

Cage and Cage Material (Select One)

- Linear (stainless steel) (**standard**)***
- Whisper Trim (316 stainless steel)**

Tubing and Fittings (Select One)

- Stainless steel tubing and steel plated fittings (**standard**)***
- Stainless steel tubing and stainless steel fittings**

DVGW Approval Required (Optional)

- Yes*

Main Valve Replacement Parts Kit (Optional)

- Yes, send one replacement parts kit to match this order

Actuator Replacement Parts Kit (Optional)

- Yes, send one replacement parts kit to match this order

Pilot Replacement Parts Kit (Optional)

- Yes, send one replacement parts kit to match this order