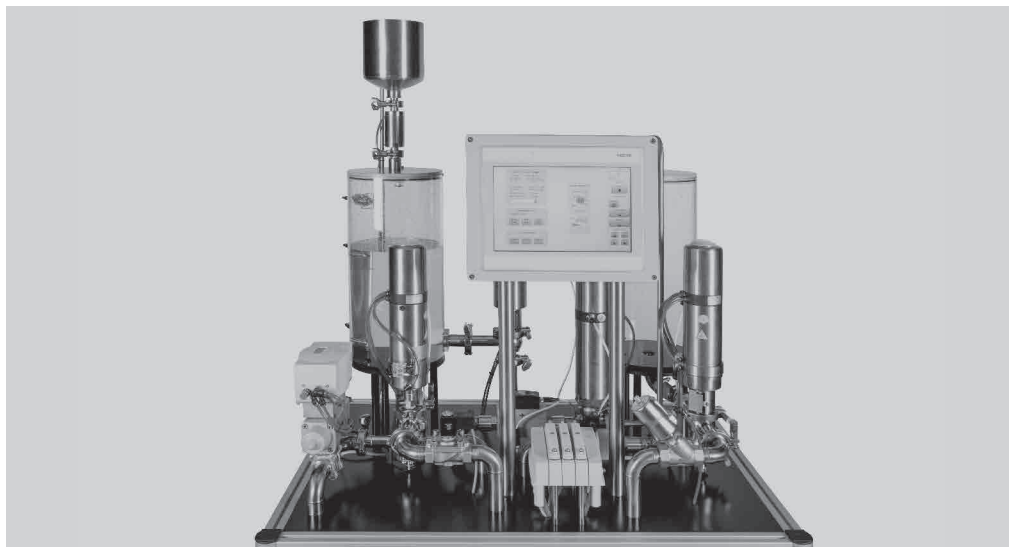


# 在线清洗自动化解决方案

## Automation solutions for clean-in-place applications

# FESTO

动态演示装置  
D-FB1401



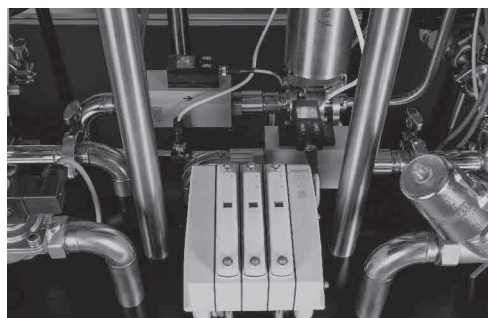
清洗时不需要拆卸工作，系统利用率更高：全自动化装置运行生产系统中的整个清洗过程 - 从输入所需的清洁剂到清洗工作。过程的自动化提高了过程可靠性，有助于减少以往在人工清洗常常会发生的错误。为您带来附加优势：从卫生级介质阀到控制技术 - 一站式提供所有自动化元件。

For high system availability, because no removal is required for cleaning: the fully automatic unit runs the entire cleaning process within the production system – from supplying the required cleaning agent right on up to the cleaning operation. Automation of the process increases process reliability. It helps to reduce the number of possible errors which commonly occur during manual cleaning.

An additional advantage for you: from the hygienic media valve to the control technology – all automation components come from a single source.



管夹阀 VZQA: 用于高要求的配剂应用场合，包括液态、研磨性或高粘度介质 - 例如高浓度清洗剂。  
Pinch valve VZQA: for demanding dosing applications involving liquid, abrasive or viscous media – for example cleaning agent concentrate.



易清洗型阀岛 MPA-C 控制过程阀和介质阀。十分适用于分散式安装方式，无需控制柜。通过以太网读取数据。  
The clean design valve terminal MPA-C controls the process valves and media valves. It's ideally suited for decentralised installation without an additional control cabinet. Subsequent data read-out via Ethernet.

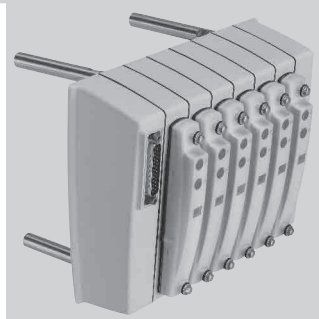
费斯托（中国）有限公司  
上海浦东金桥出口加工区  
云桥路 1156 号  
电话：021-60815100  
传真：021-58540300  
www.festo.com.cn

# 在线清洗自动化解决方案

## Automation solutions for clean-in-place applications

易清洗型阀岛 MPA-C

Clean design valve terminal MPA-C



非常易于清洗，耐腐蚀，耐受清洁剂。防护等级达到 IP69K，带冗余密封系统。材料符合 FDA 规定，润滑脂符合 NSF-H1 标准。

Extremely easy to clean and resistant to corrosion and cleaning agents. IP69K protection with redundant sealing system, FDA-compliant materials and NSF-H1 grease.

管夹阀 VZQA

Pinch valve VZQA



- 常闭或常开型
- 模块化的元件零部件，可更换
- 结构易清洗，适用于自动化清洗
- 气源直通接口，无需驱动器
- 膜片材质：NBR, EPDM 和硅（常闭型仅提供 EPDM）

- NC or NO version
- Modular, interchangeable component parts
- Clean design for automatic cleaning
- Direct air supply connection without drive
- Membrane material: NBR, EPDM and now silicon as well (NC version with EPDM only)

卫生级过程阀产品范围，用于分离、关闭和控制 - 用于有卫生级要求的应用场合

Hygienic process valve range for separating, closing and controlling – for applications with hygienic requirements

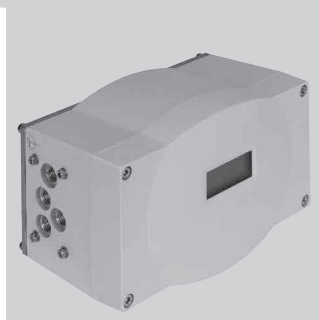


- 产品范围齐全：从卫生级球阀到双提动阀
- 维护维修方便
- 耗气量低
- 通过阀控制单元 CPPI-K 可靠地进行控制
- 所有阀符合 EHEDG，提动阀获得 3A 认证

- Comprehensive range: from hygienic butterfly valve to double poppet valve
- Simple to maintain and service
- Low air consumption
- Reliable control via valve control unit CPPI-K
- All valves in accordance with EHEDG, poppet valves 3A certified

定位器 CMSX，用于双作用摆动驱动器

Positioner CMSX for double-acting semi-rotary drives



- 工作节能
- 采用模拟量和数字量反馈信号，确保过程可靠性
- 通过模拟量信号，可配置终端位置

- Energy-efficient operation
- Good process reliability thanks to analogue and digital feedback signals
- End position configurable via analogue signal

人机界面 CDPX

Graphic display and operator unit CDPX



- 完美的图形显示
- 项目工程设计和编程十分简单直观
- 通过集成的以太网接口，可以连接网络，方便地进行设置，实现通信
- 通过 Modbus TCP 可显示其他厂商 Modbus 设备传输而来的数据和参数

- Perfect graphic displays
- Extremely simple and intuitive project engineering and programming.
- Communicative: simple networking and setup via the integrated Ethernet interface
- Data and parameters from Modbus devices from other manufacturers can be displayed via Modbus TCP.