

GSH3-20/32

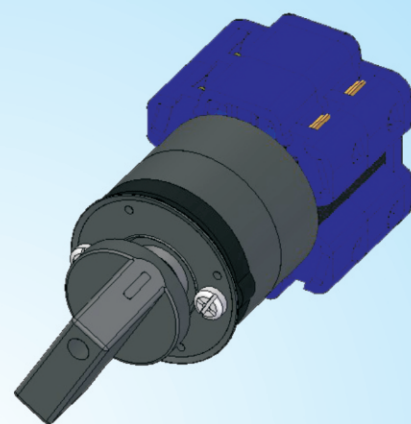
护指型快速转换开关

GSH3-20/32 Finger-protected Type

Fast Change-over Switch

——控制电器产品名录 2014

安全 智能 灵动



CE UL CCC TÜV CB RoHS

ISO9001 ISO14001 OHSAS18001

用途 APPLICATION

GSH3-20/32护指型快速转换开关，主要用于AC-21A使用类别下，交流50Hz、额定工作电压230V/400V时，额定工作电流至32A的电路中，可作为电路控制开关、测试设备开关、电动机控制开关和主令控制开关，及电焊机用转换开关等，尤其在UPS等不间断电源系统中，主要用作切换为标准电源进行测试的开关。AC-3使用类别下，额定工作电压为400V，额定工作电流至22A的电路中，直接启动、运转中分断三相异步电动机。

GSH3-20/32 finger-protected type fast change-over switch, mainly used in AC-21A use category, AC 50 Hz, rated operational voltage 230 V / 400 V, rated operational current to 32A circuit, and can be used for circuit control switch, test equipment switch, motor control switch and master control switch, and with electric welder use change-over switch and so on, especially in UPS uninterrupted power supply system, mainly used in changing-over as standard power test switch. AC-3 use category, rated operational voltage is 400 V, rated operational current to 22A circuit, direct-on starting, in operation breaking three-phase asynchronous motor.

产品符合标准GB14048.3, GB14048.5, 及IEC/EN60947-3、IEC60947-5-1。

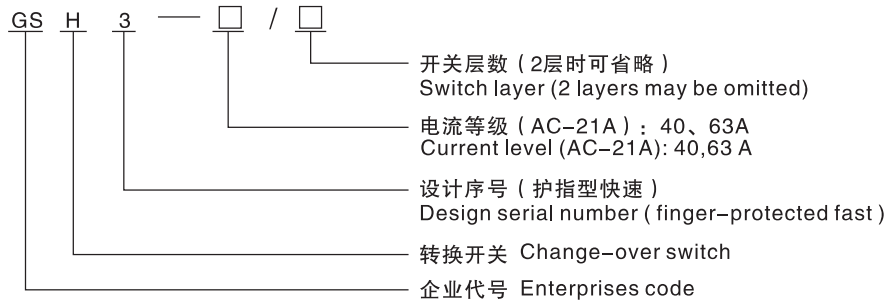
Products meet the standards GB14048.3, GB14048.5, and IEC/EN60947-3, IEC60947-5-1.

注：该产品不可作为双电源切换开关使用。

Note: this product can not be used as dual power selector switch.

型号含义 TYPE AND MEANING

■ 型号及含义 type and meaning



■ 产品可根据需要组成不同层数，产品可做2、3、4、5、6、7、8层。

The product can be according to the need of different layer, the product can do 2、3、4、5、6、7、8 layer.

产品特点 PRODUCT FEATURES

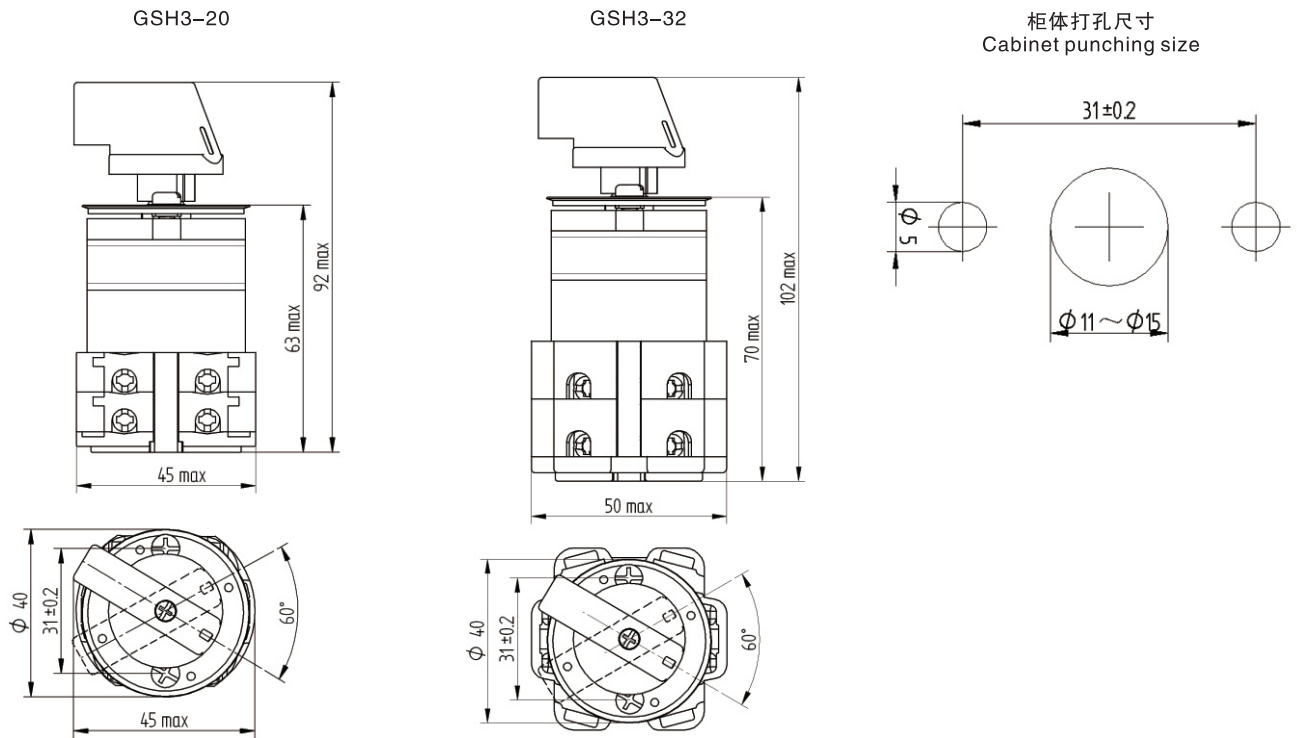
- △ 常开常闭触头转换时间小于6ms。
Normal open and normal close contact changeover time less than 6 ms.
- △ 采用快速转换机构。Use fast switching mechanism.
- △ 动作机构为直动式，触头为双断点。
Action mechanism is directly operated type, contact is double breakpoint.
- △ 安装方式为板后螺钉安装。
The way of installation is mounting screw after the board.
- △ 防护等级IP20 (护指型)。Protection grade IP20 (finger-protected).
- △ 环保型材料制作而成。Made of environment friendly material.
- △ 符合标准IEC/EN60947-3 GB14048.3。Meet a criterion IEC/EN60947-3 GB14048.3

主要技术参数 MAIN TECHNICAL PARAMETERS

表(Table)1

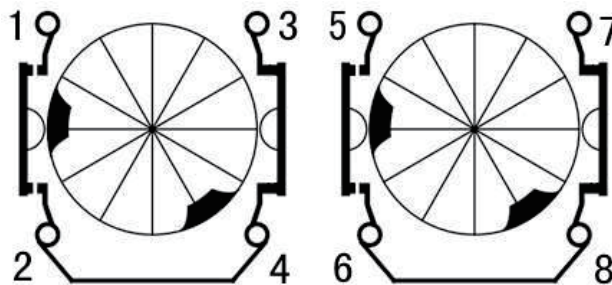
型号规格 Type specification	使用类别 Using type	额定绝缘电压 Ui (V) Nominal insulation voltage Ui (V)	额定工作电压 Ue (V) Rated operational voltage Ue (V)	额定工作电流 Ie(A) Rated operational current Ie(A)	额定控制功率 (KW) Rated control power (KW)
GSH3-20	AC-21A	690	230、400	20	/
	AC-3	690	400	10	5.5
GSH3-32	AC-21A	690	230、400	32	/
	AC-3	690	400	22	11
操作频率 (次/h) Operation frequency		120			

产品外形及安装尺寸 PRODUCT APPEARANCE AND INSTALLATION SIZE

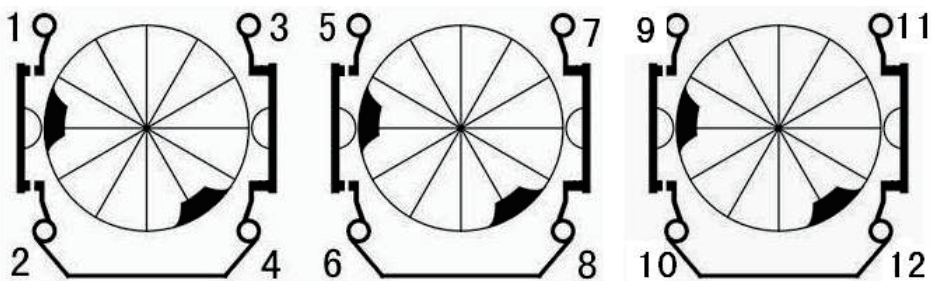


接线图 WIRING DIAGRAM

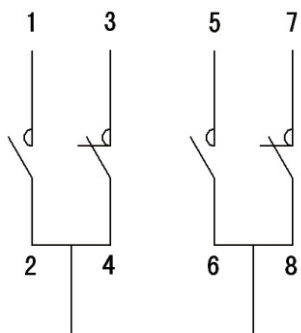
单相接线图
One-phase wiring diagram



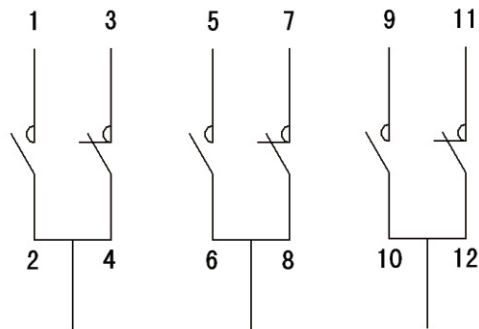
三相接线图
Three phase wiring diagram



单相原理图
One-phase schematic diagram



三相原理图
Three phase schematic diagram



接点编号 Contact numbers	产品出厂触头状态 Manufactured products contact state
1-2	常开 Normal open
3-4	常闭 Normally closed
5-6	常开 Normal open
7-8	常闭 Normally closed
9-10	常开 Normal open
11-12	常闭 Normally closed

说明：“】”表示触点短接 Explanation: “】” means contact short circuit

接线能力 WIRING ABILITY

产品型号 The product model	GSH3-20	GSH3-32
软导线 (mm ²) Flexible circuit conductor (mm ²)	1.0 ~ 4.0mm ²	1.5 ~ 6.0mm ²
螺纹直径(mm) Diameter of thread (mm)	M3	M4
拧紧力矩(Nm) Tightening torque(Nm)	0.5Nm	1.2 Nm

注意事项 ANNOUNCEMENTS

- 该产品不可作为双电源切换开关使用。
This product can not be used as dual power selector switch.
- 安装方式为板后螺钉安装。
The way of installation is mounting screw after the board.